

**Emmaus Road Partners**  
123-C Library Hill Lane  
Lexington, SC 29072



Emmaus Road Partners 123-C Library Hill Lane, Lexington, SC 29072

Late Summer 2019

Dear Teammates,

We pray that you've had a wonderful summer! Thank you for your friendship, investment and prayer for our new Emmaus Road Partners ministry. Please enjoy this update.

In May 2018, we officially launched Emmaus Road Partners. Our mission is "to help Christian ministries thrive". As a result of our staff being fully funded, we offer free consulting, coaching and challenge grants to new and growing nonprofits.

Our services include personal coaching, mission clarity, organizational structure, board development and fundraising.

In addition to consulting, as a result of our monthly staff tithe and our Hank Parker Celebrity Clay Shoot, we have given away \$110,000 to a growing list of non-profit ministries.

We currently work with approximately twenty individuals and organizations. Two of our biggest projects this year have been with Ezekiel Ministries an inner-city youth mentoring program in Columbia and Fostering the Family in Rock Hill, SC addressing the state-wide shortage of Foster Care homes.

Our growing client list also includes: Hope School, Ironman Outdoors, Vision of Giving, Palmetto Family Council, Leadership Ministry, Music Ministry, Church Sports Ministry, Camp Ministry, Impact Ministry, South Carolina Empowerment and various others.

On the pages following you will see a sampling of how we have come alongside some Christian Ministries and worked with them to help them thrive!

There are several ways you can help by investing in

Emmaus Road Partners:

- 1) Support our staff's individual Home Teams'
- 2) Give to our Mission/Giving Fund
- 3) Help us cover our minimal monthly operational cost

Your tax-deductible gift should be made to Christ Central - ERP or give online.

Thank you for being a friend of our ministry!

**ERP Staff**

<https://emmausroadpartners.org/>







## ABOUT EZEKIEL MINISTRIES

Ezekiel Ministries exists to share the love and truth of Jesus to families in inner-city Columbia. They do this by providing tangible help in the areas of education and family literacy. Ezekiel's two main programs are an after-school program and a mentoring program for under-resourced children in Downtown Columbia, SC. Their long term goals are to strengthen the family structure and help families break the cycle of generational poverty. They focus on academics, character development, spiritual wellness, and teamwork. [www.ezeministries.org](http://www.ezeministries.org)

## Helping Christian Ministries Thrive

We are a diverse group of Christian leaders and professionals who want to help your ministry grow and flourish. We partner with small local ministries to provide advice, support, funding, expertise and encouragement.

It is our desire to see God glorified and lives transformed by Jesus Christ by walking alongside those who are serving "the least of these" in the state of South Carolina and beyond.

## HOW WE HELPED

As with many ministries, the greatest short term need is funding to facilitate the work and growth of the ministry. The team at Emmaus Road Partners have been conducting fund raising banquets for over 15 years, so we helped Ezekiel Ministries produce a development dinner and celebration this past Fall. As a result, Ezekiel Ministries was able to raise over \$50,000 in financial support. Part of those resources were used to add additional staff so they can minister to more children in the Columbia area.

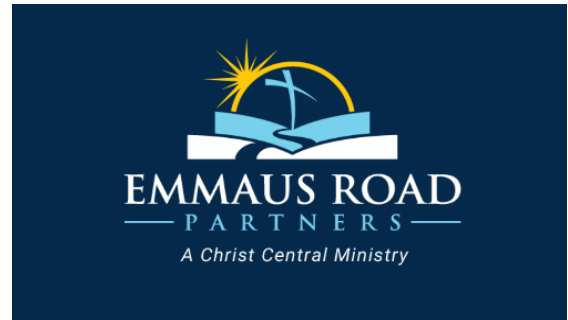


*"With the help of Emmaus Road Partners, I have personally been able to grow as a non-profit executive and a ministry leader in ways I didn't even know I needed to. The decades and decades of experience they bring to the table has been invaluable to me both professionally and personally. They have really helped Ezekiel Ministries thrive!"*

Josh Whitlock | Director, Ezekiel Ministries







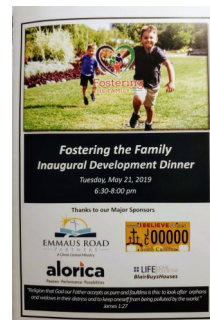
## ABOUT FOSTERING THE FAMILY

Fostering the Family exists to assist, support and recruit families in their call to foster and adopt by mobilizing and equipping the local church to strategically care for each family physically, emotionally and spiritually. Their vision is to see every church in the state supporting at least one foster or adoptive family.

[www.fosteringthefamily.org](http://www.fosteringthefamily.org)

## HOW WE HELPED

Emmaus Road Partners utilized our years of ministry and fund raising experience to help Fostering the Family with their first fundraising banquet. The banquet was an overwhelming success with over 150 ministry partners attending and pledging over \$40,000 to help the ministry grow. We also provided encouragement, counsel and accountability as the leaders faced numerous challenges

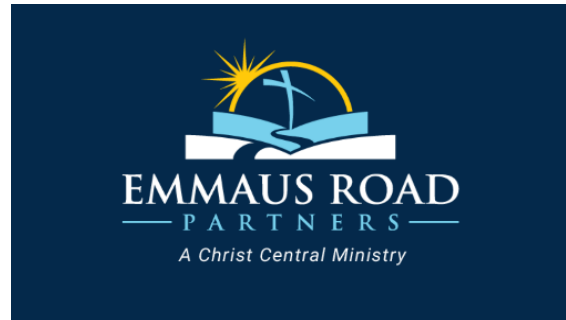


*"Without Twig and David's expertise, guidance, and encouragement, the banquet would have never happened much less been a resounding success and a huge boost to this ministry! Also, it is wonderful to have someone to call and discuss how to handle the challenges of a small and growing ministry"*

*Kim Trainer  
Fostering the Family*







## FOSTERING THE FAMILY'S BOARD PLANNING WORKSHOP

### ABOUT FOSTERING THE FAMILY

[www.fosteringthefamily.org](http://www.fosteringthefamily.org)

Fostering the Family exists to assist, support and recruit families in their call to foster and adopt by mobilizing and equipping the local church to strategically care for each family physically, emotionally and spiritually.

Their vision: "Igniting the Church to surround Foster and Adoptive Families!"

### HOW WE HELPED

As a follow-up to the first fundraising banquet in May, Emmaus Road Partners led FTF's first board workshop recently in Clover, SC. We were able to utilize our years of working with successful boards and volunteers to help unify new and existing board members around vision and mission clarity, teambuilding, event planning and budgeting. The best result was seeing everyone taking on various committee leadership roles to accomplish the ministry together.



*"I just wanted to thank you for the investment into Fostering the Family through leading Betsy and I through the leadership aspect of the board retreat!"*

*The Team building game was a highlight. Mostly because our team "got it" right at the last minute and it definitely made the point. It took knowledgeable, talented people and opened their eyes to how much working together makes us stronger as well as finding solutions together.*

*The Mission/ Vision time was critical to our development as a board. I wish we had had more time allotted to this—the time we did spend was invaluable.*

*This is something that you are really good at and both of you walking around was helpful in the development. It was the sauce to the spaghetti.*

*God Bless you Both! And thank you for the amazing development of a ministry through your investment into Betsy and I and our board!*

*Kim Trainer & Betsy Ruch  
Fostering the Family*





### ABOUT THE HANK PARKER SHOOT

The Hank Parker Celebrity Invitational Shoot is celebrating it's 8th year of providing businesses and individuals the opportunity to experience guided quail hunting, exciting sporting clay competitions, rich fellowship, delicious food and, most importantly, the life-changing gospel of Jesus Christ through personal testimonies and messages. This year, attendees heard from Mark Conklin, the former director of leadership development at Chick-fil-a, and our host, Hank Parker, the legendary bass fisherman and outdoorsman.

[www.hankparkershoot.org](http://www.hankparkershoot.org)



Emmaus Road Partners staff member Alan Welch is the director for the Hank Parker Shoot and has crafted a unique event that is attended and loved by many local celebrities. It's an atmosphere of fellowship and unity unlike any other.

This year's shoot raised over \$160,000. All the proceeds will be donated to four national ministries including [The Fellowship of Christian Athletes](#), [Clebe McClary Evangelistic Association](#), [Tim Lee Ministries](#), and Emmaus Road Partners (we distribute 100% of these funds to deserving local ministries across the state and beyond).

Be sure to save the date for next year's event - March 12-13, 2020







## ABOUT TIM LEE MINISTRIES

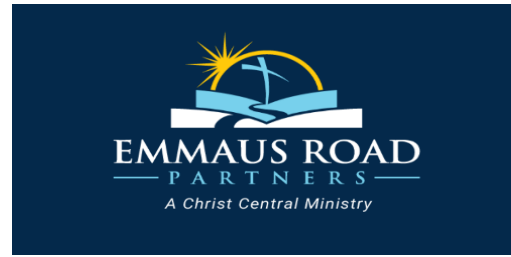
Tim Lee was born and raised in southern Illinois to John and Wanda Lee. His father pastored Southern Baptist Churches for 60 years.

In 1971 while serving in the United States Marine Corps in South Vietnam Tim Lee gave both of his legs to America. Instead of quitting or becoming bitter, Tim allowed God to use this major event in his life to propel him into a ministry that no one could have imagined at that time.

Tim has spent the past 40 years in active ministry as a full time evangelist. He has ministered in 49 states and numerous countries of the world. He has addressed thousands of local churches, Christian schools, civic organizations, colleges and universities as well as hundreds of special patriotic events. Tim Lee is known as the "Legendary Speaker" at MCRD Parris Island, where he speaks to thousands of Marines and Marine Recruits every year.

Also, for 25 years Tim and his family have hosted one of the most exciting teen camps in America called YOUTH ALIVE.

<https://www.timlee.org/>



## HOW WE HELPED

The greatest door of opportunity for Tim Lee Ministries opened in 2013 when they were invited to go to MCRD Parris Island, SC to have Sunday morning church. They now go 4-5 times a year and have church for almost two hours on Sunday with an average of about 3,000 in attendance.

Tim says, "Each time we go we have a brand new group of recruits and Marines. I give my story and then a clear presentation of the Gospel of Jesus Christ. Then I give a public invitation for people to come to Christ. A conservative estimate in the 26 events that we have had at Parris Island is that over 27,000 Marines and Marine Recruits have left their seats with tears and brokenness to come and give their hearts and lives to Jesus Christ!"

"It takes a lot of money to put these events together, and I knew our ministry could not financially pay for everything so when Emmaus Road Partners and Hank Parker wanted to come along beside us financially it was a huge answer to prayer."



"The cost of producing the Sunday events at Parris Island was a major obstacle to an incredible opportunity. The financial help from Emmaus Road Partners and Hank Parker has been a clear answer to prayer. Also, the support and encouragement we receive is immeasurable."

Tim Lee

